



FLORIDA DEPARTMENT OF TRANSPORTATION - DISTRICT FOUR PUBLIC INFORMATION FLYER

FDOT/SFWMD US 27 Everglades Agricultural Area (EAA) Reservoir Inflow-Outflow Canal Bridges Project

Palm Beach County, Florida

The Florida Department of Transportation (FDOT), District Four, is pleased to provide information regarding the proposed above referenced project in Palm Beach County, Florida. The new bridges are in the interest of both the FDOT and the South Florida Water Management District (SFWMD) and will provide a connection between the Everglades Agricultural Areas (EAA) Reservoir Inflow-Outflow canal and the existing North New River canal. No public information meeting is scheduled for this project. Project information is posted at: [FDOT Palm Beach County - FM 448136-1 SR-25/US-27 Twin Bridges](#).

PROJECT IMPROVEMENTS

- Construction of a new canal connection from the North New River canal on the east side of SR 25/US 27 to the west side of SR 25/US 27.
- Construction of twin bridges over the new canal.
- Roadway reconstruction and repaving to transition to the new twin bridges.

CONSTRUCTION IMPACTS

- Work will be done in phases to reduce the effects of construction on the surrounding area.
- Temporary lane closures during non-peak hours will have minimal effects on traffic.
- No detours are anticipated. Two travel lanes in each direction will be maintained.

CONSTRUCTION INFORMATION

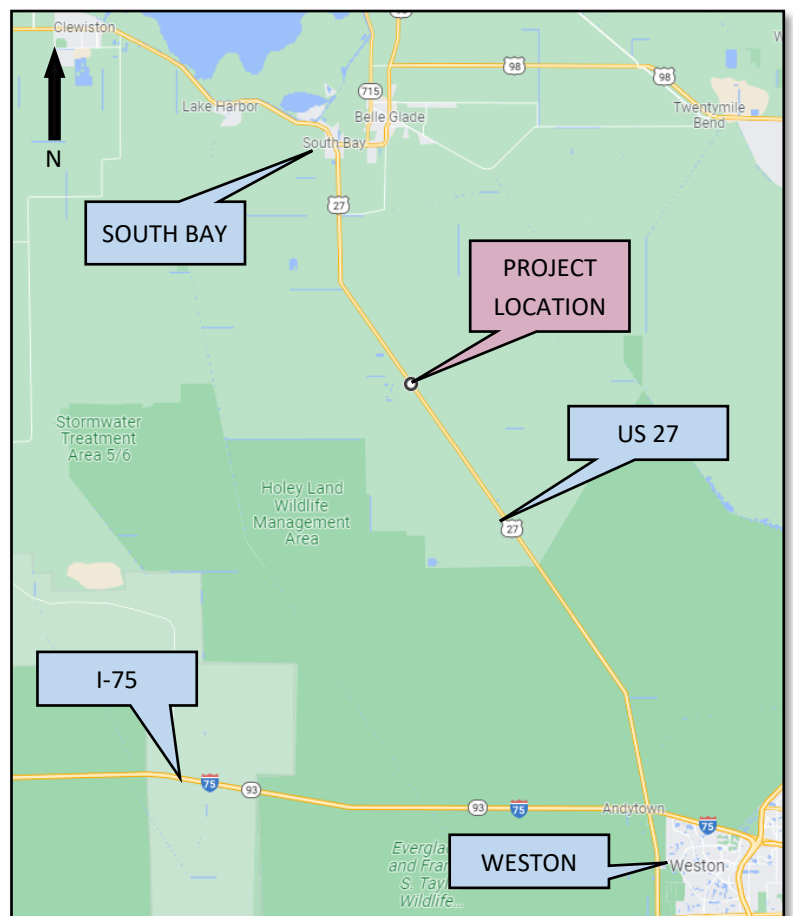
- Construction Start Date: **Spring 2025**
- Anticipated Completion: **Spring 2027**
- Construction Cost Estimate: **\$12.2 million**

CONTACT INFORMATION

James Hughes, P.E., FDOT Project Manager
Florida Department of Transportation, District Four
3400 West Commercial Boulevard
Fort Lauderdale, FL 33309
Phone: (954)777-4419 or Toll Free (866)336-8435
Ext. 4419, Email: james.hughes@dot.state.fl.us

WEB & SOCIAL MEDIA

Project Website: www.d4fdot.com
Facebook: www.facebook.com/MyFDOTSEFL/
Instagram/Twitter: @MyFDOT_SEFL



FLORIDA DEPARTMENT OF TRANSPORTATION MISSION STATEMENT

The Department will provide a safe transportation system that ensures the mobility of people and goods, enhances economic prosperity, and preserves the quality of our environment and communities.

Public participation is solicited without regard to race, color, national origin, age, sex, religion, disability, or family status. Persons who require special accommodations under the Americans with Disabilities Act (ADA) or persons who require translation services (free of charge) should contact James Hughes, P.E., Project Manager.



BRIDGE CONSTRUCTION IN PROGRESS

SR 25/US 27 SFWMD Input-Output Canal

SR 25/US 27 Twin Bridges @ 27 Miles North of the I-75/US 27



Florida Department of Transportation
Office of Design
ATTN: James Hughes, P.E.
3400 West Commercial Boulevard
Fort Lauderdale, Florida 33309

